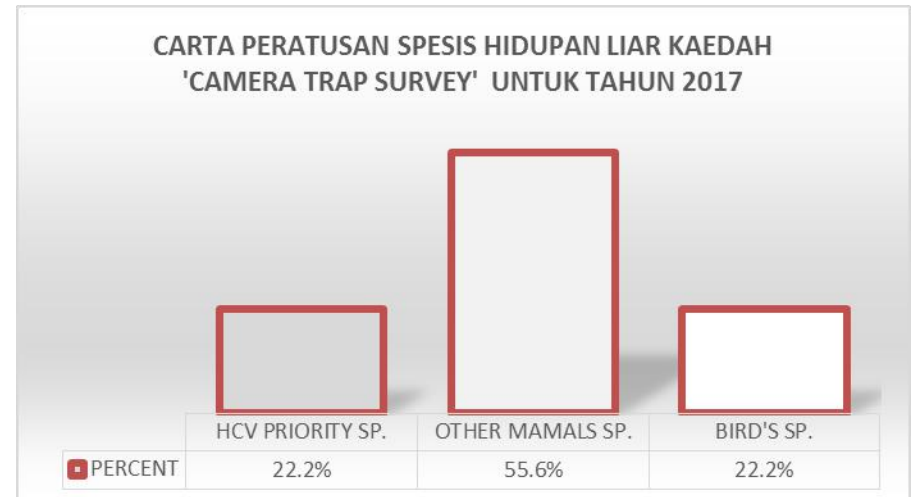
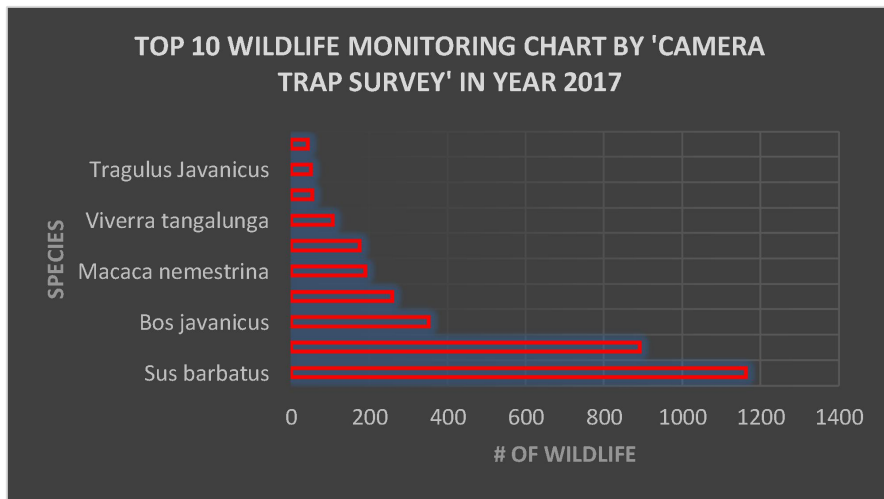


Camera Trapping (Camera-Traps Placed In Strategic Locations)

Table 1. List of Camera Traps Installed and the number of recorded Pictures in 2017

No	Scientific Name	Wildlife Species	Q1 CT						Q2 CT				Q3 CT		Q4 CT					Total	%
			ICT 4	ICT 10	ICT 11	BTCT 7	BTCT 10	BTCT 18	ICT 12	ICT 13	BTCT 8	BTCT 13	ICT 14	BTCT 21	ICT 14	ICT 15	BTCT 22	BTCT 23	BTCT 24		
1	<i>Sus barbatus</i>	Bearded Pig	86	123	3	2	0	6	153	54	12	0	517	0	3	135	24	45	0	1163	33.9%
2	<i>Cervus unicolor</i>	Sambar Deer	9	30	39	2	0	1	62	255	25	0	6	0	0	392	6	62	3	892	26.0%
3	<i>Elephas maximus</i>	Bornean Elephant	0	0	0	0	0	0	0	39	0	8	0	0	0	3	0	0	0	50	1.5%
4	<i>Neofelis diardi bomensis</i>	Clouded Leopard	0	3	0	0	0	0	0	0	0	0	0	0	0	0	0	0	0	3	0.1%
5	<i>Helarctos malayanus</i>	Sun Bear	0	3	0	0	0	0	2	0	0	0	0	0	0	0	2	0	0	7	0.2%
6	<i>Bos Javanicus</i>	Tambadau	0	0	0	0	0	0	106	126	0	0	0	0	0	120	0	0	0	352	10.3%
7	<i>Macaca nemestrina</i>	Pig-tailed macaque	0	3	3	8	8	6	3	0	0	0	72	19	12	3	36	0	9	182	5.3%
8	<i>Macaca fascicularis</i>	Long-tailed Macaque	0	0	0	0	0	0	0	0	0	0	9	0	0	0	0	6	0	15	0.4%
9	<i>Viverra zangalunga</i>	Malay Civet	0	3	0	1	0	0	23	0	0	0	6	4	3	36	30	0	0	106	3.1%
10	<i>Hemigalus dermianus</i>	Banded Palm Civet	0	0	0	0	0	0	0	0	0	0	3	0	0	0	0	0	0	3	0.1%
11	<i>Hystrix brachyura</i>	Common Porcupine	3	6	0	1	2	0	0	0	0	0	0	0	0	0	0	3	0	15	0.4%
12	<i>Muntiacus muntjac</i>	Bornean Red Muntjac	0	0	0	0	13	3	0	0	0	0	0	0	0	0	0	0	0	16	0.5%
13	<i>Muntiacus atherodes</i>	Bornean-yellow muntjac	0	0	18	0	0	0	42	3	0	0	67	9	0	0	0	12	24	175	5.1%
14	<i>Prionailurus bengalensis</i>	Leopard Cat	0	0	0	0	0	0	6	0	0	0	0	0	0	0	0	0	0	6	0.2%
15	<i>Herpestes brachyurus</i>	Shord-tailed Mongoose	0	0	6	0	0	0	0	0	0	0	0	3	0	0	0	0	0	9	0.3%
16	<i>Tragulus napu</i>	Greater Mousedeer	1	36	51	0	23	0	7	0	0	0	69	0	33	0	3	36	0	259	7.6%
17	<i>Tragulus Javanicus</i>	Lesser Mousedeer	0	0	0	0	0	0	0	0	0	0	0	0	0	0	51	0	0	51	1.5%
18	<i>Martes flavigula</i>	Yellow-throated Marten	0	0	0	0	0	0	0	0	0	0	3	0	0	0	0	0	0	3	0.1%
19	<i>Arctictis binturong</i>	Binturong	0	0	0	0	0	0	3	0	0	0	0	0	0	0	0	0	0	3	0.1%
20	<i>Cynogale bennettii</i>	Otter Civet	0	0	0	0	0	0	0	0	0	0	0	0	0	0	3	0	0	3	0.1%
21	<i>Trichys fasciculata</i>	Long-tailed Porcupine	0	0	18	0	0	0	0	0	0	0	0	0	0	0	0	0	0	18	0.5%
22	<i>Anhinga melanogaster</i>	Great Argus	0	0	0	3	1	0	0	0	0	0	0	0	0	0	0	0	6	10	0.3%
23	<i>Copsychus stricklandii</i>	White-crowned Shama	0	0	0	0	0	0	0	0	0	0	0	0	0	0	0	3	0	3	0.1%
24	<i>Pitta Sp.</i>	Pitta Sp.	0	0	0	0	0	0	0	0	0	0	0	0	0	15	0	0	0	15	0.4%
25	<i>Lophura Ignita</i>	Crested Fireback	0	9	33	0	0	0	6	0	0	0	3	0	0	0	3	0	0	54	1.6%
26	<i>Pitta Baudii</i>	Blue-headed Pitta	0	9	0	0	0	0	0	0	0	0	0	0	0	0	0	0	0	9	0.3%
27	<i>Chalcophaps indica</i>	Emerald Dove	0	3	0	0	0	0	0	0	0	0	0	0	0	0	3	0	0	6	0.2%
			99	228	171	17	47	16	413	477	37	8	755	35	51	689	176	167	42	3428	100%

Figure 1. Graph and Wildlife Chart using the 'CAMERA TRAP SURVEY' Method in 2017



Data analysis from our camera traps recorded that the *Bearded Pig* (1,163 pictures), *Sambar Deer* (892 pictures) and *Banteng / Tembadau* (352 Pictures) are three of the highest presence detected from our camera traps. From all of the wildlife presence detected and recorded, six HCV 'Priority' species were present which is the *Bornean Elephant*, *Sambar Deer*, *Bearded Pig*, *Clouded Leopard*, *Tembadau* dan *Sun Bear*. Camera traps were placed in 16 locations and recorded 3,428 pictures in 2017. The data in 4th Quarter recorded the highest number of picture with a total of 1,125 which consists of 18 wildlife species.

